



Classroom Touch Panel

- 1) PC Main – LEFT monitor content (PC audio source)
- 2) PC Extended – RIGHT monitor content
- 3) Doc Cam – Document camera content
- 4) Laptop – Laptop content (via HDMI)
- 5) Wireless – Wireless presentation
- 6) Blank – Black out the selected screen
*Un-blank by selecting desired source

Note: Desired **Audio Source** must be selected on **Left Projector**

Turn on System

Touch the screen and wait for projectors to power on.



Select a Source

1. Tap the desired projector icon.
2. Tap the desired source icon.

Adjust Volume

1. Tap the  icon
or **up/down** arrows on edge of touch panel.

Turn off System

1. Tap the **Exit System**  icon
or  button on edge of touch panel.
2. Tap "Confirm" to exit system.

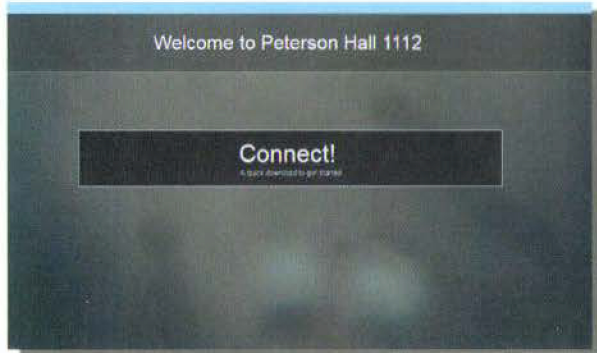
Classroom Features

- Four projection screens (second set of screens mirror content)
- Instructor computer
- Computer monitor with annotation capability
- Wireless presentation (see reverse side)
- Wireless lavalier and handheld microphones for in room speech reinforcement
- Ink2Go (screen annotation and capture software)
- For more information, visit the GMU Stearns Center website:
<https://stearnscenter.gmu.edu/classroomguide>

BEFORE YOU BEGIN...

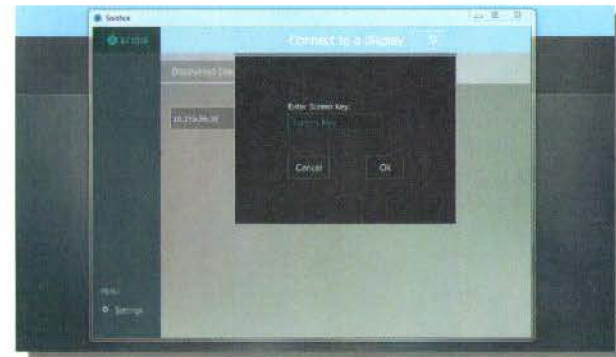
(1) **Connect** to "Mason-Secure" wireless network. (2) **Select** the "Wireless" button on the room touchpanel.

1



Open your internet browser
Connect to the IP address on the screen
 (Note: Run a file if prompted, then select the "Enter IP" tab)

2



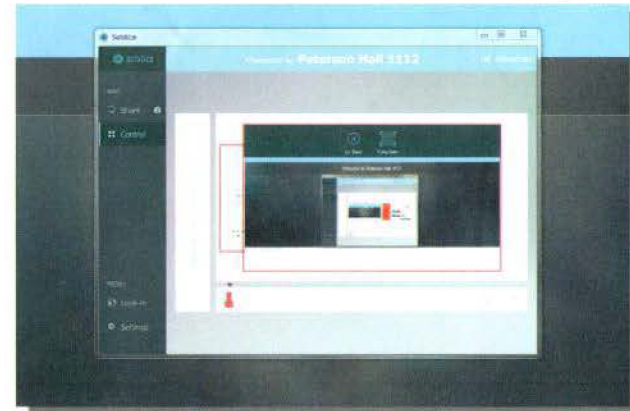
Enter the 4 digit code displayed on the screen when requested
 (Note: code will be different each time you connect)

3



You are now connected!
Share your desktop
Share an active application (i.e. PowerPoint)
Share a media file you have saved on your laptop

4



Every file you select will be put in a queue
 To **display a file** full screen, select the image and select **Full Screen**

TO DISCONNECT...

Select the "Stop Sharing" button to ensure that your sharing session is terminated.